



DECO RENDER®

Urban Concrete Finish



DECO RENDER

is a polymer modified mix formulated to recreate a smooth and dust free finish for both interior and exterior wall applications.

No special equipment is needed to achieve our finish. Hand trowels, along with our instructional videos, are all you will need to get you started in creating a concrete wall with an industrial finish. Our products are easy to use, mix and manageable.

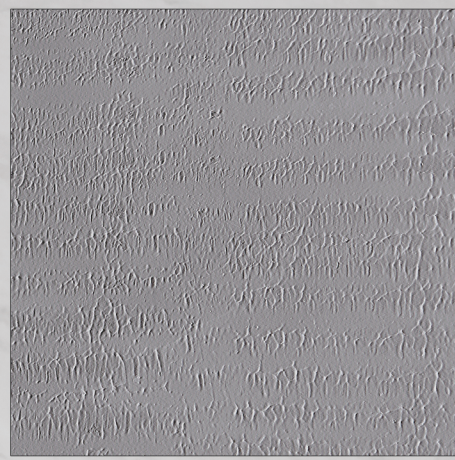
Developed to create the look and feel of casting concrete suitable for application to interior walls, columns and ceilings. The finish can be polished, waxed or sealed to give a smooth sheen with various textured finishes.



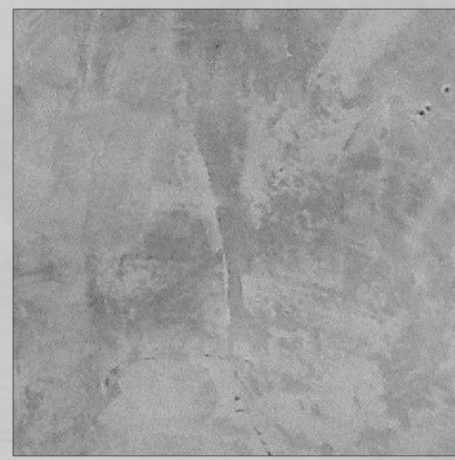
TEXTURES



Astroturf Finish



Artgrass Finish



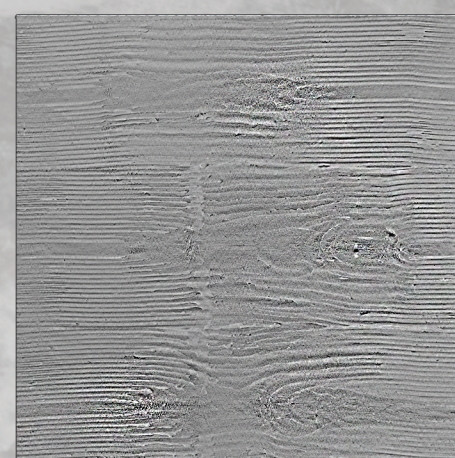
Venetian Plaster



Smooth Finish



Roller Rag Finish



Wood Finish



Trowel Finish

COLORANT

Slate Grey	Aspen Grey	Touch Stone	Moonlit White
Classic Grey	Hudson Grey	Fossil	Pelican
Royal Canvas	Graphite	Chalkboard	

COLOR STAIN

Canary	Crimson Red	Canterbury Wood	Ranch House	Tangerine	Jet Black	Seaweed Green
Cobalt Blue	Cedar Green	Taupe Gray	Stone Gray	Slate Gray	Chestnut	Navajo Brown
Golden Saffron	Aztec Brown	Stonewall	Pumpkin Spice	Timberidge	Cotton White	Safari Tan
Outback Brown	Cypress Earth					

Colorants are added to the render during application while stains added topically to highlight or enhance your desired color finish.

Textured finishes like floated, raked, screened and weathered concrete can also be replicated to create more depth and character for your walls. Combining our Deco Render with our Colorants and Color Stains, you will be able to achieve variations of concrete-based colors to match the final color you have in mind.

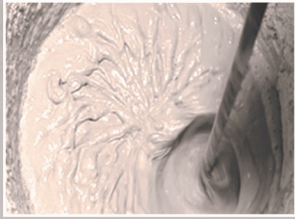
For free consultations and installation instructions, visit our website:

www.gtstoneworks.com

DECO RENDER®

Urban Concrete Finish

MIXING AND APPLICATION



1. Pour the Fortress Deco Render needed in the plastic bucket, Add up to 40% of water based on the weight of the render. Use handheld electric mixer until render is free from lumps.



4. Allow the surface to cure for 3 days before sanding and sealing. Use sandpaper to determine the level of smoothness you want to achieve.



2. After reaching the consistency desired, do not dilute further with water. Make sure surface is free from dirt, oil and debris. Apply Fortress Deco Render thinly (1.5mm) with steel trowel. Allow surface to dry for atleast 12 hours.



5. Wash the surface and allow to dry before applying sealer. Penetrating or film forming sealers can be used. Test first on a small area to select gloss level required.



3. Apply 2nd Coat (3.0-5.0mm) and use trowel to smoothen surface. To add profile and design, use a texturing tool on the surface for your desired effect.

Our complete line of pre and post treatment accessories, such as surface primers, polishing cream, colorants and water-based sealers, gives you complete control in creating your ideal finish and making sure it would last a long time.

FOR BEST RESULT



DECO PRIMER



DECO RENDER COLORANTS



CONCRETE STAINS



PENETRATOR WB SEALER



NANO SEAL WB SEALER

LIMITED WARRANTY

FORTRESS DECO RENDER is covered from the date of purchase when used on substrate which conforms to local building codes and when installed, in accordance with the manufacturer's instruction. FORTRESS DECO RENDER will replace those which are determined to be defective. This warranty is limited to the original purchaser and may not be transferred to any subsequent owner. This warranty does not cover damage resulting from: settlement of the building or other wall movement, mixing with other chemicals or additives and prolonged exposure to heat and other irregular temperature. This warranty covers only manufacturing defects in FORTRESS DECO RENDER. It will not cover labor costs or damages obtained from removal and replacement of defective products.

FORTRESS®

ADMIXTURES AND SEALERS

ACTUAL COLORS MAY VARY FROM BROCHURE 12/2019

FOR PROFESSIONAL USE ONLY